

Product datasheet



sHLA-A*02:07

A*0207, A0207, A*02, A02, A2

Serological Name	A2
Peptide Load	Endogenous
Modification	Unmodified
Conjugation	Unconjugated
SKU	A0207

Product Description

Allele Name	A*02:07 B2m
HLA Class	HLA Class I
HLA Gene Locus	HLA-A
Alternative Allele Name A Chain	A*0207, A0207, A*02, A02, A2
Alternative Allele Name B Chain	-
Description	Recombinant, truncated Class I soluble Human Leukocyte Antigen (sHLA), naturally folded and glycosylated, loaded with endogenous peptides.
Serological Name	A2
Serological Split	-
Bw4/Bw6 Assignment	-
Bw4/Bw6 Sequence	-
Allele Frequency [World Population]	
A chain	3.50%
B chain	-

Associated products

[A0207bio](#)
[A0207pe](#)

Product Specification

Product name	HLA-A*02:07
HLA Species	Human
Host Cell Line Species	Human
Clone Designation	PC6 C10
Tail Specification	VLDL
Peptide Load	Endogenous
Modification	Unmodified
Conjugation	Unconjugated
Complexity	Monomer
Protein Format	Recombinant, truncated, soluble, non-modified, non-labeled, endogenously loaded
Storage Temperature	4 °C (This product should be stored undiluted)
Form	Liquid
Concentration	1000.0 µg/ml
Formulation	PBS/0.02% Sodium Azide
pH	7.4
Purification Method	Affinity Chromatography
Grade	Research Use Only [RUO]
Authentication Verification	Sequence Based Typing

Protein Sequences

Alpha Chain Sequence	GSHSMRYFFT SVSRPGRGEP RFIAVGYVDD TQFVRFSDSA ASQRMEPRAP WIEQEGPEYW DGETRKVKAH SQTHRVDLGT LRGYYNQSEA GSHTVQRMCG CDVGSQDWRFL RGYHQYAYDG KDYIALKEDL RSWTAADMAA QTTKKHWEAA HVAEQLRAYL EGTCVEWLRRL YLENGKETLQ RTDAPKTHMT HHAVSDHEAT LRCWALSFPY AEITLTWQRD GEDQTQDTEL VETRPAGDGT FQKWAAVVVP SGQEQRYTCH VQHEGLPKPL TLRVSVSTDD DLA
Beta Chain Sequence	IQRTPKIQVY SRHPAENGKS NFLNCYVSGF HPSDIEVDLL KNGERIEKVE HSDLSFSKDW SFYLLYYTEF TPTEKDEYAC RVNHVTLSPQ KIVKWDRDM

Related Products

[A0201](#)
[A0203](#)
[A2402](#)
[B0702](#)

Applications

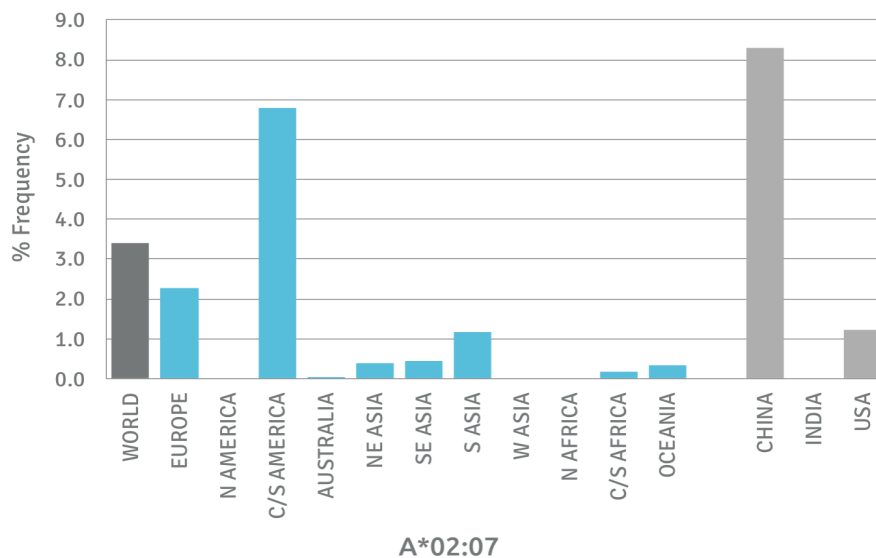
HLA Sandwich ELISAs
HLA Direct ELISAs
HLA-Sera Antibody Assays
HLA Controls in ELISA Assays
HLA Assay Standards
HLA Blocking Assays
HLA Neutralizing Assays
HLA Competition Assays
HLA Bead Assays
HLA Immunization Procedures

Recommended Antibodies

W6/32
Anti-B2m

Allele Frequency

Worldwide Allele Frequency



Please note:

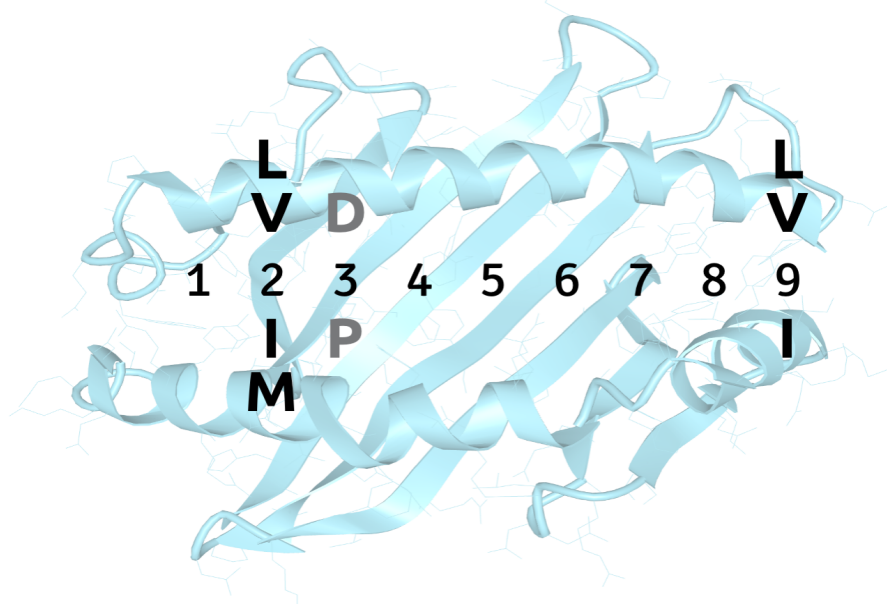
ALL PRODUCTS ARE FOR RESEARCH USE ONLY. NOT FOR COMMERCIAL USE IN DIAGNOSTIC PROCEDURES.
For more information, please visit our Policies section on our website. For licensing inquiries, please contact

licensing@hlaprotein.com

 HLA Protein
PURE PROTEIN, LLC

Motif

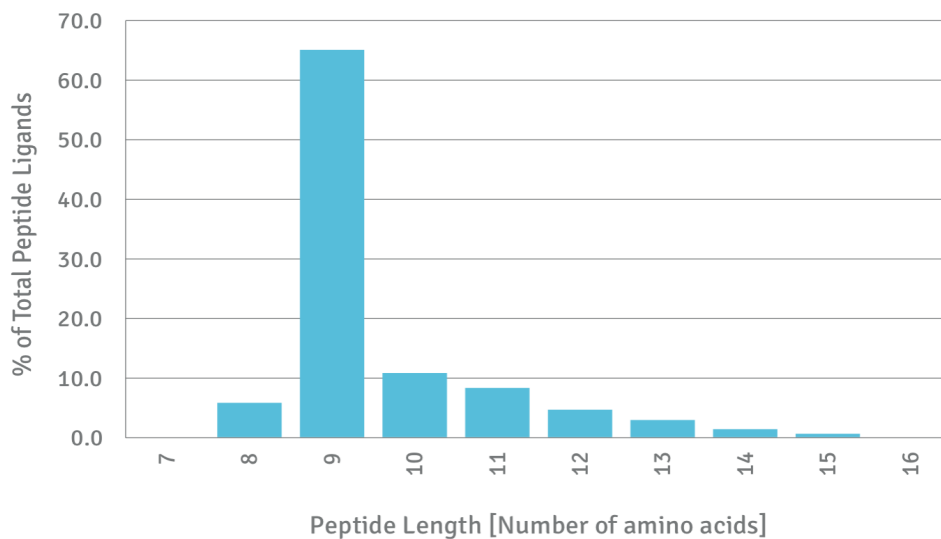
A*02:07 BINDING MOTIF



Length Distribution

HLA Length Distribution

A*02:07



Please note:

ALL PRODUCTS ARE FOR RESEARCH USE ONLY. NOT FOR COMMERCIAL USE IN DIAGNOSTIC PROCEDURES.

For more information, please visit our Policies section on our website. For licensing inquiries, please contact

licensing@hlaprotein.com

Eplet Assignments

A*02:07

Eplet	Polymorphic Residues	Antibody Reactivity
9F	9F	
44RM	44R45M	
44RME	44R45M46E(67V)	
62GE	62G63E	Yes
62GK	62G66K (74H77D)	Yes
65RA	65R69A	
65RK	65R66K	
66K	66K	
66KA	66K69A	
66KH	66K70H	
71HS	70H71S	
76VDT	76V77D80T	
77D	77D	
79GT	79G80T	Yes
80T	80T	
80TL	80T81L	
95V	95V	
97R	97R	
105S	105S	
107W	107W	Yes
109F	109F	
114H	114H	
116Y	116Y	
127K	127K	Yes
144K	144K	Yes
144TKH	142T144K145H	Yes
145KHA	144K145H149A	Yes
149AH	149A151H	
150AAH	149A150A151H	Yes
150AH	150A151H	
151AHV	150A151H152V	
151H	151H	
152V	152V	
156L	156L	
163T	163T	
184A	184A	
193AV	193A194V	
194V	194V	
207S	207S	
253Q	253Q	Yes

